

# ACARE-Annual Meeting of the African Great Lakes Stakeholders Network



## Lake Kivu Advisory Group



LKAG

**Presenter's Name: Dr Riziki Walumona, PhD**

**Position: Deputy Coordinator**

**Advisory Group Name: Lake Kivu Advisory Group**

**Day 1 Presentation**  
**Mulungushi International Conference**  
**Center**  
**4-6 February 2025**  
**Lusaka, Zambia**



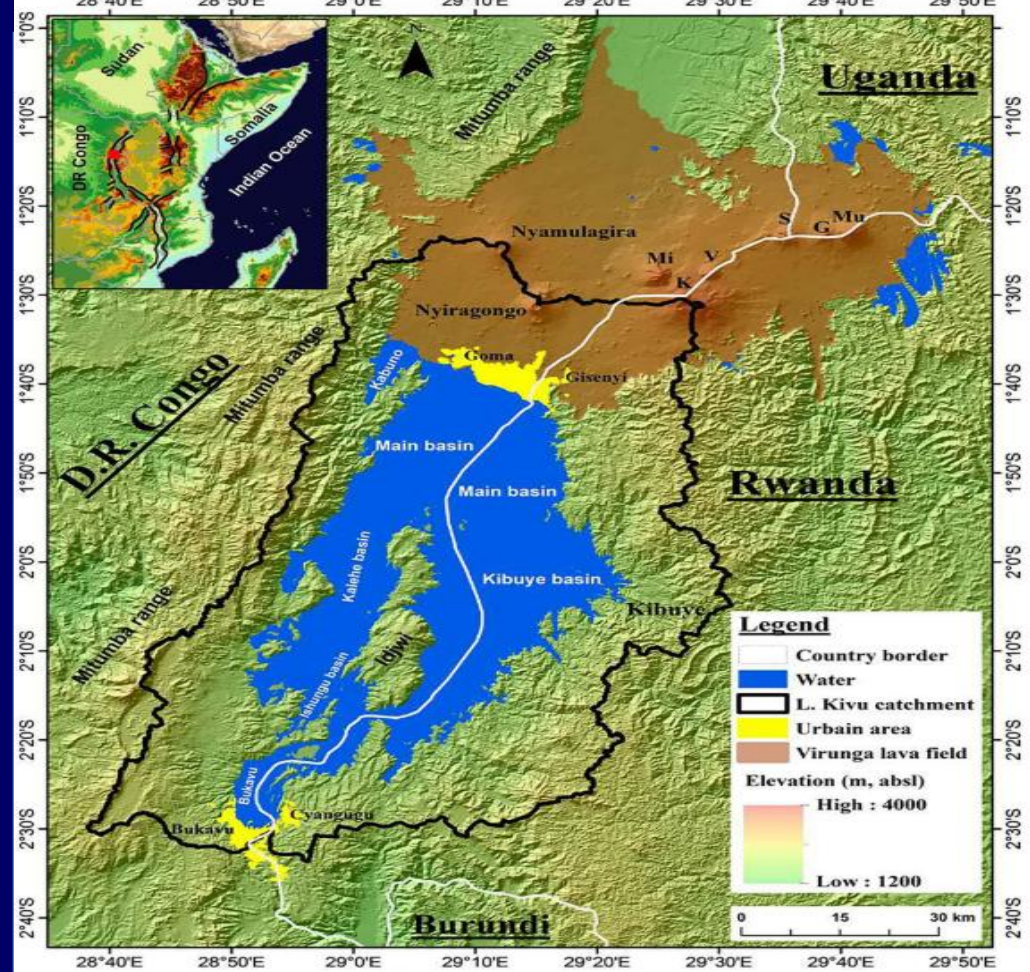
# Presentation Outline

---

- **Biogeography of the Lake Kivu**
- **Advisory Group Founding: Goals and Objectives, and membership**
- **2024 Critical Objectives: Priorities, Achievements, lessons learnt and key take-aways**

# Biogeography of the lake

- East African Rift Valley between two riparian countries, the Democratic Republic of the Congo (DRC) and Rwanda
- Surface: 2370 km<sup>2</sup>, Volume: 560 km<sup>3</sup>, Max depth: 485 m
- High density population in its catchment (>400 inhab/km<sup>2</sup>)
- Annual precipitation on Lake surface 3.3 km<sup>3</sup>
- 29 fish species
- 9460-11360 tons/year (for both DRC and Rwanda)
- Fishery supports 500,000 people in Rwanda and RDC
- Large amounts of methane: ~60 km<sup>3</sup> and carbon dioxide: ~300 km<sup>3</sup>
- Methane extraction, aquaculture, tourism



## **Advisory Group Founding and Goal**

---

- **Founded in November 2019**
- **Mission:**
  - **To enhance communication and collaboration of entities across borders and sectors that work to research**
  - **To solve issues that impact the health of the lake and surrounding communities.**
  - **To enhance scientific understanding of the lake and its influents.**
- **Members at the beginning (6): DRC (4), Rwanda (2)**
- **Current AG membership (22): Democratic Republic of the Congo (12), Rwanda (10)**

## **2024 Critical Objectives: Reflections on the Prorities**

---

- 1. Organize a summer school in limnology- targeting lab technicians and research assistants of both riparian countries (DRC and Rwanda), standardization of protocols**
- 2. Assessment of the technical capacity – Strength, Weakness, Opportunities, Threats (SWOT) of institutions working on Lake Kivu**
- 3. Proposal writing and submitting on sustainable in Lake Kivu to potential funders according to available calls for projects.**



# 2024 Critical Objectives: Key Achievements & Take-aways

Objectives	Achievements	Take-aways						
<p><b>1. Organize a summer school in limnology-targeting lab technicians and research assistants of both riparian countries (DRC and Rwanda), standardization of protocols</b></p>	<ul style="list-style-type: none"> <li>- <b>Writing a summer school concept note</b></li> <li>- <b>Adapting the project proposal to meet the required format for funding submission</b></li> </ul>	<p><b>Limited access to financing is a key obstacle to our project's implementation.</b></p>						
<p><b>2. Assessment of the technical capacity – Strength, Weakness, Opportunities, Threats (SWOT) of institutions working on Lake Kivu</b></p>	<p style="text-align: center;"><b>Lake Kivu Advisory Group</b></p> <table border="1" style="width: 100%; border-collapse: collapse;"> <tr> <td style="width: 20%; text-align: center; vertical-align: middle;">Internal origin (Attributes of the organization)</td> <td style="width: 40%; background-color: #e6f2e6;"> <p style="text-align: center;"><b>Strengths</b></p> <ul style="list-style-type: none"> <li>. Well-skilled members</li> <li>. Diverse competences and expertise</li> <li>. Monthly meetings and regular exchanges</li> <li>. Different career stages</li> <li>. Efficient exchange platform</li> </ul> </td> <td style="width: 40%; background-color: #e6f2f2;"> <p style="text-align: center;"><b>Weakness</b></p> <ul style="list-style-type: none"> <li>. Limited financial resources</li> <li>. Weak link between decision-makers and LKAG</li> <li>. Low local and international collaboration</li> <li>. Lack of clear management plan</li> <li>. ACARE is still unknown on the ground</li> <li>. Regulatory inconsistency in the Lake Kivu management</li> </ul> </td> </tr> <tr> <td style="width: 20%; text-align: center; vertical-align: middle;">External origin (Attributes of the environment)</td> <td style="width: 40%; background-color: #fff9c4;"> <p style="text-align: center;"><b>Opportunities</b></p> <ul style="list-style-type: none"> <li>. Collaborations with other Great Lakes</li> <li>. Transboundary collaboration</li> <li>. Emerging opportunities for harmonized long term monitoring</li> <li>. Collaboration among different labs (e.g. (ISP, LKMP, INES) working on lake Kivu</li> <li>. Define and propose measures for assessing and implementing projects on Lake Kivu and its basin</li> </ul> </td> <td style="width: 40%; background-color: #ffe0b2;"> <p style="text-align: center;"><b>Threats</b></p> <ul style="list-style-type: none"> <li>. Low involvement of institutions responsible for Lake Kivu management</li> <li>. Ineffective projects or actions implementation</li> <li>. Lack of community participation in the actions of LKAG</li> <li>. Potential conflict of interest between the governments of both riparian countries and the LKAG due to the absence of a formal agreement among the parties</li> </ul> </td> </tr> </table>	Internal origin (Attributes of the organization)	<p style="text-align: center;"><b>Strengths</b></p> <ul style="list-style-type: none"> <li>. Well-skilled members</li> <li>. Diverse competences and expertise</li> <li>. Monthly meetings and regular exchanges</li> <li>. Different career stages</li> <li>. Efficient exchange platform</li> </ul>	<p style="text-align: center;"><b>Weakness</b></p> <ul style="list-style-type: none"> <li>. Limited financial resources</li> <li>. Weak link between decision-makers and LKAG</li> <li>. Low local and international collaboration</li> <li>. Lack of clear management plan</li> <li>. ACARE is still unknown on the ground</li> <li>. Regulatory inconsistency in the Lake Kivu management</li> </ul>	External origin (Attributes of the environment)	<p style="text-align: center;"><b>Opportunities</b></p> <ul style="list-style-type: none"> <li>. Collaborations with other Great Lakes</li> <li>. Transboundary collaboration</li> <li>. Emerging opportunities for harmonized long term monitoring</li> <li>. Collaboration among different labs (e.g. (ISP, LKMP, INES) working on lake Kivu</li> <li>. Define and propose measures for assessing and implementing projects on Lake Kivu and its basin</li> </ul>	<p style="text-align: center;"><b>Threats</b></p> <ul style="list-style-type: none"> <li>. Low involvement of institutions responsible for Lake Kivu management</li> <li>. Ineffective projects or actions implementation</li> <li>. Lack of community participation in the actions of LKAG</li> <li>. Potential conflict of interest between the governments of both riparian countries and the LKAG due to the absence of a formal agreement among the parties</li> </ul>	<p><b>Advisory groups are effective learning and capacity-building platforms</b></p>
Internal origin (Attributes of the organization)	<p style="text-align: center;"><b>Strengths</b></p> <ul style="list-style-type: none"> <li>. Well-skilled members</li> <li>. Diverse competences and expertise</li> <li>. Monthly meetings and regular exchanges</li> <li>. Different career stages</li> <li>. Efficient exchange platform</li> </ul>	<p style="text-align: center;"><b>Weakness</b></p> <ul style="list-style-type: none"> <li>. Limited financial resources</li> <li>. Weak link between decision-makers and LKAG</li> <li>. Low local and international collaboration</li> <li>. Lack of clear management plan</li> <li>. ACARE is still unknown on the ground</li> <li>. Regulatory inconsistency in the Lake Kivu management</li> </ul>						
External origin (Attributes of the environment)	<p style="text-align: center;"><b>Opportunities</b></p> <ul style="list-style-type: none"> <li>. Collaborations with other Great Lakes</li> <li>. Transboundary collaboration</li> <li>. Emerging opportunities for harmonized long term monitoring</li> <li>. Collaboration among different labs (e.g. (ISP, LKMP, INES) working on lake Kivu</li> <li>. Define and propose measures for assessing and implementing projects on Lake Kivu and its basin</li> </ul>	<p style="text-align: center;"><b>Threats</b></p> <ul style="list-style-type: none"> <li>. Low involvement of institutions responsible for Lake Kivu management</li> <li>. Ineffective projects or actions implementation</li> <li>. Lack of community participation in the actions of LKAG</li> <li>. Potential conflict of interest between the governments of both riparian countries and the LKAG due to the absence of a formal agreement among the parties</li> </ul>						
<p><b>3. Proposal writing and submitting on sustainable in Lake Kivu to potential funders according to available calls for projects</b></p>								

## **2024 Critical Objectives: Lessons & Areas of Improvement**

---

- 1. From the objective 1. Funds are required to carry out the summer school program.**
- 2. From the objective 2. Capacity building is an urgent milestone that must be achieved, along with fundraising to address existing scientific gaps.**
- 3. From the objective 3. A project proposal will be developed and implementation would resolve some of the existing gaps**



*Thank you*

*Questions, please contact: Our Communication Office*

*E-mail: [kisengoja@yahoo.fr](mailto:kisengoja@yahoo.fr)*

*<https://www.agl-acare.org/advisory-groups>*