



African Center for Aquatic Research and Education

Presentations use and notice:

The content and information in this presentation was created through the collaborative efforts and processes of the African Great Lakes Stakeholder Network Workshop held November 5-7, 2019 in Entebbe, Uganda. Any information within this presentation is provided by ACARE and its partners and should be cited as such.

Lake Edward/Albert Advisory Group

Entebbe 5-7 November 2019



Participants

Oscar Wembo (DRC, Group Leader)

Joseph Matunguru (DRC)

Herbert Nakiyende (Ug)

Mbalassa Mulongaibalu (DRC)

Gertrude Atukunda (Ug)

William Okello (Ug)

Joyce Ikwaput Nyeko (Ug)

Robert Baluku (Ug)

Angel Nankabirwa (Ug, note taker)

Maarten Van Steenberge (Be, Facilitator)



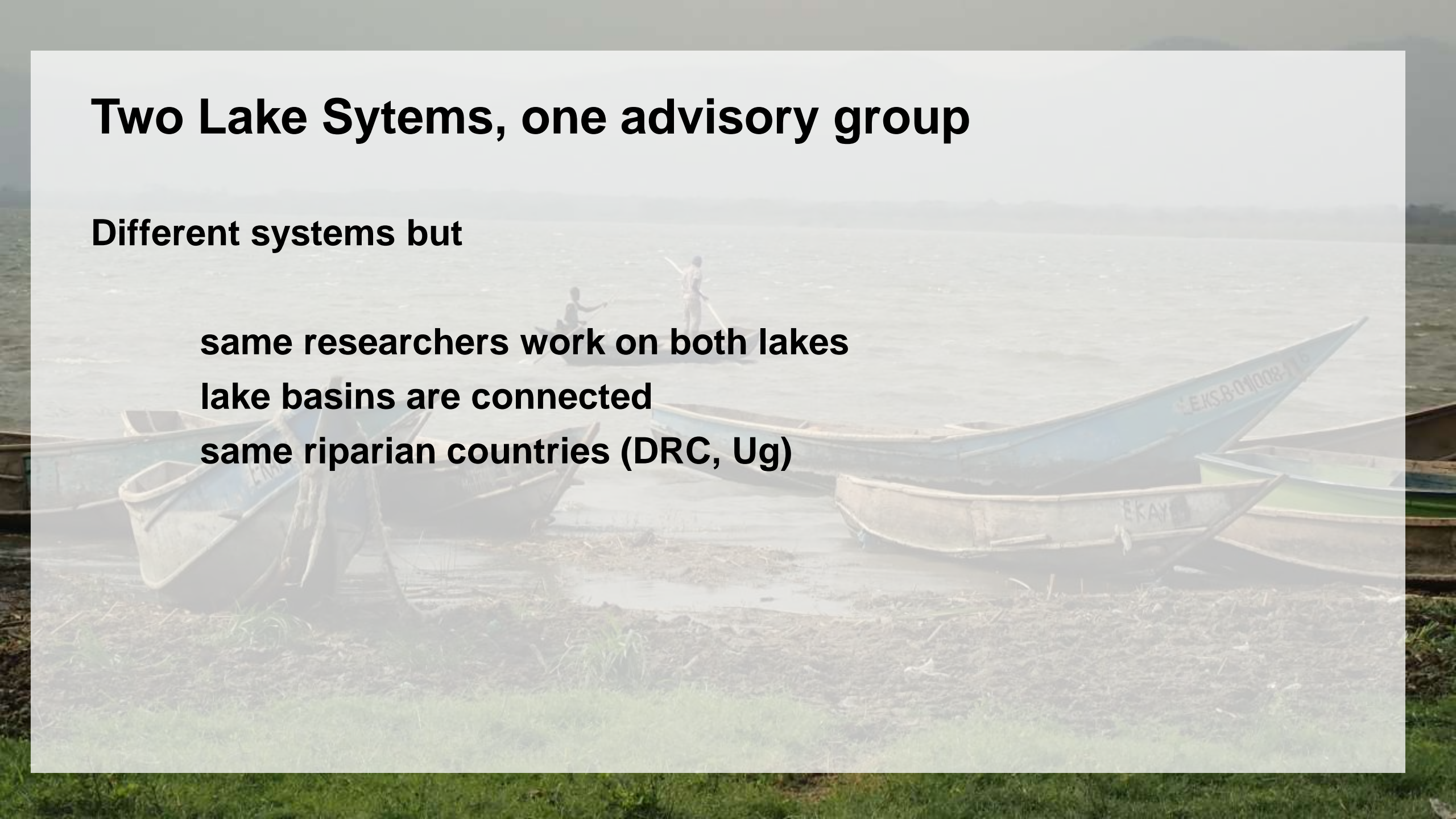
Two Lake Systems, one advisory group

Different systems but

same researchers work on both lakes

lake basins are connected

same riparian countries (DRC, Ug)



Feasibility assessment

Existing Research Framework

LEAF (II) project

NELSAP (Nile Basin Initiative)

collaborative research between Ug and DRC

harmonised sampling, SOP

infrastructure

mainly limited to fisheries and socio-economics

agreement signed at ministry levels

Feasibility assessment

Existing Research Framework

LEAF (II) project

NELSAP (Nile Basin Initiative)

collaborative research between Ug and DRC

harmonised sampling, SOP

infrastructure

mainly limited to fisheries and socio-economics

agreement signed at ministry levels

Gaps in collaborative research

Data and research on

water quality

(cage) aquaculture

oil and gas

wildlife management

Only continued funding for 2 years to go

→ Need a long-term network for a holistic research approach

Specific purpose of the Lake(s) Advisory Group

Build on the existing collaboration across boundaries, include players working on the gaps identified, investigate issues that impact the health of the lakes and the well-being on surrounding communities and suggest solutions.

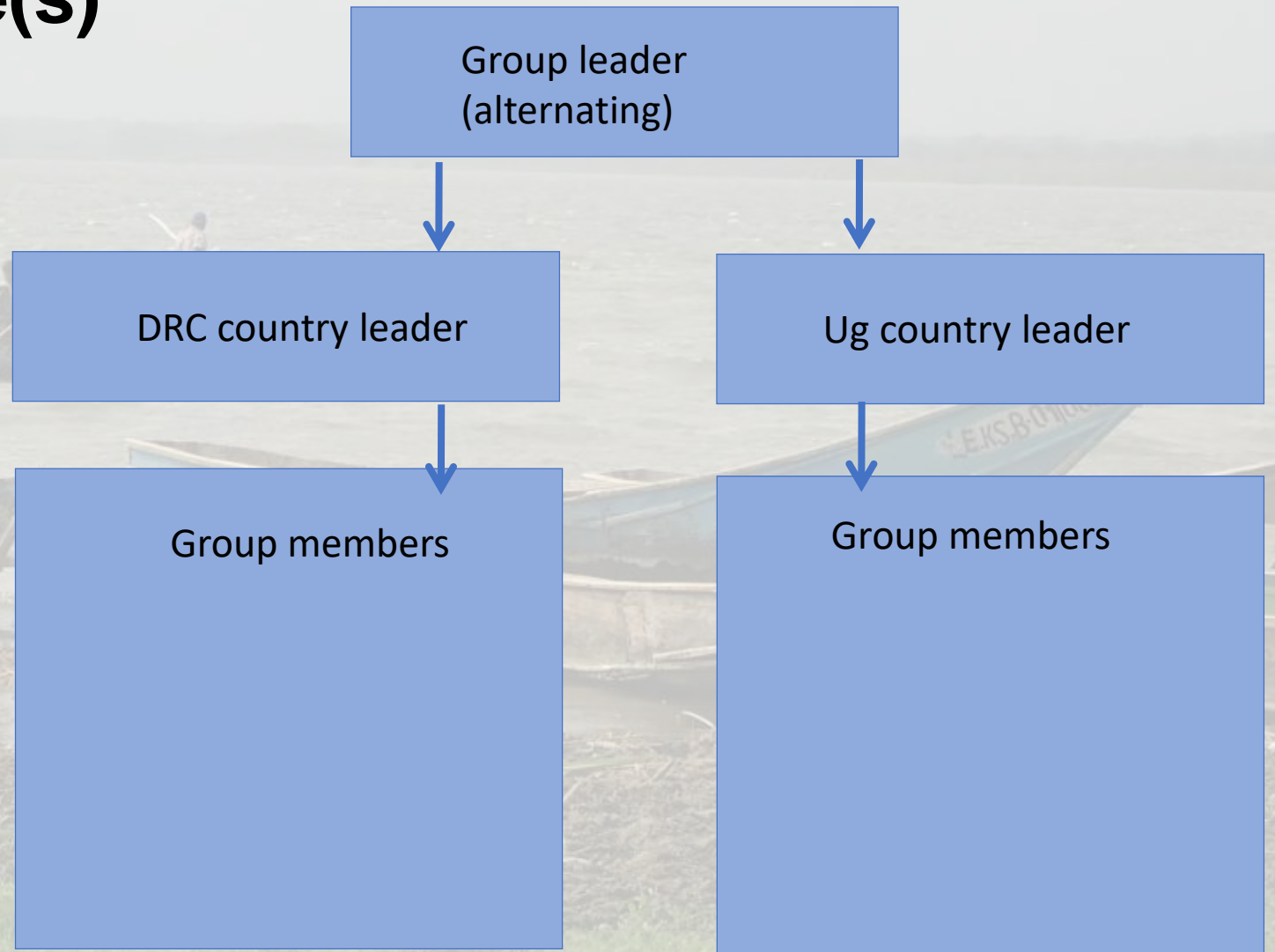
Structure of the Lake(s) Advisory Group

Meetings

regional (annual)

national (annual)

local meetings (sites)



Structure of the Lake(s) Advisory Group

Meetings

regional (annual)

national (annual)

local meetings (sites)

Joyce Ikwaput Nyeko
(Ug, NELSAP)

Mbalassa Mulongaibalu
(UOB)

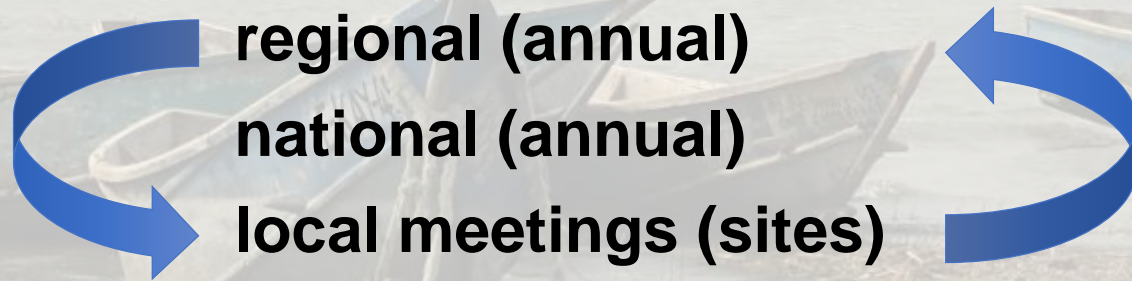
Oscar Wembo (UoR,
UoK)
Joseph Matunguru
(Fisheries and Livestock)
...

Herbert Nakiyende
(NaFIRRI)

Gertrude Atukunda
(NaFIRRI)
William Okello
(NaFIRRI)
Robert Baluku (UWRTI)
Angel Nankabirwa
(NaFIRRI)
...

Structure of the Lake(s) Advisory Group

Meetings



Invite external experts
when needed

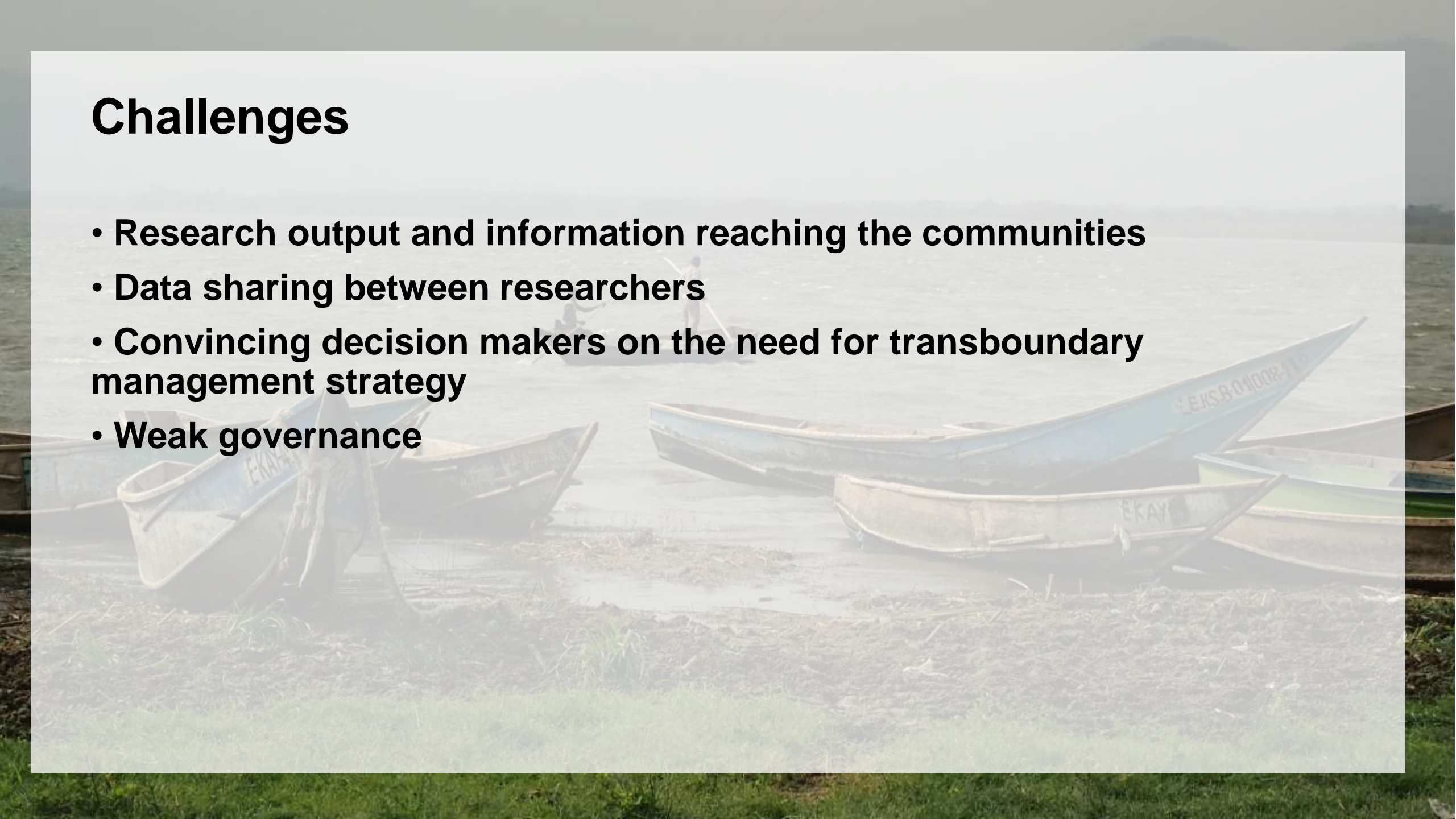
Agricultural researchers
Universities
Petroleum Sector
Civil Society
Managers
Policy makers

Priority list in research

- Food-web and biodiversity of the lakes relatively unknown
- **Remote sensing system for African Great Lakes**
- Causes of invasive aquatic weeds on the lakes
- How aquatic weeds can be converted into useful resources such as biogas
- How the different sizes of small pelagic fishes can be harvested
- Gazetting of breeding areas
- Pollution studies on these lakes versus the increasing population
- Baseline data to inform management about oil exploration in the Nile Basin lakes
- Socio-economics studies to inform livelihood options
- Hydro-meteorological stations on the Lakes
- Inventory on the information available for both lakes
- Demarcation of national boundaries
- Conduct trans-boundary research for law enforcement
- Dissemination of research results
- Research should inform when and where to catch specific fishes
- Hydrological information
- Environmental and socio-economic aspects of cage aquaculture on the lakes
- Post-harvest losses in relation to the small species (an analysis is needed to come up with sustainable methods of post-harvest handling)
- Mapping the value chain of fisheries
- ...

Challenges

- **Research output and information reaching the communities**
- **Data sharing between researchers**
- **Convincing decision makers on the need for transboundary management strategy**
- **Weak governance**



Required funding

- **Travel expenses for regional, national and local meetings**
- **Travel expenses to visit decision makers in respective capitals**
- **Communication tools to disseminate findings to local communities (leaflets, posters, projectors)**
- **Specific funding for key research**
- **Link the network to existing institutions so that financing is possible even without external support.**