



## African Center for Aquatic Research and Education

### Presentations use and notice:

The content and information in this presentation was created through the collaborative efforts and processes of the African Great Lakes Stakeholder Network Workshop held November 5-7, 2019 in Entebbe, Uganda. Any information within this presentation is provided by ACARE and its partners and should be cited as such.

# Lake Kivu Advisory Group:

## Report for the African Great Lakes Stakeholders Network Workshop

Lak Kivu report



Rwanda



DRC

# Purpose of the Group

## ***Main purpose:***

*to enhance communication and collaboration of entities across borders and sectors that work to research and solve issues that impact the health of the lake and surrounding communities.*

## Specific objectives

- **Standardization of research protocols on the lake** (sample the same on both countries) in order to make the results comparable for the concerning lake.
- **To identify lacking information and (knowledge) gaps in the scientific research on LK**
- **Build technical capacity and acquire research equipment**
- **Training of the people / human resources**
- **Act as a frame to promote research and education** (project proposals, fundraising ...)
- **Sharing data on a common platform and dissemination**

## Specific purposes (contin'd)

- Make recommendations for policy making*
  - *To ensure a new generation is trained properly and promote the inclusiveness (gender balance ,...).*
  - *Enhancing research mobility and to share experience between other lakes (and advisory groups) and within LK.*
  - *To facilitate knowledge and transfer new technology to the riparian communities/Research oriented towards the needs of the community*
  - *To understand and get inspiration from the traditional knowledge of the local communities*

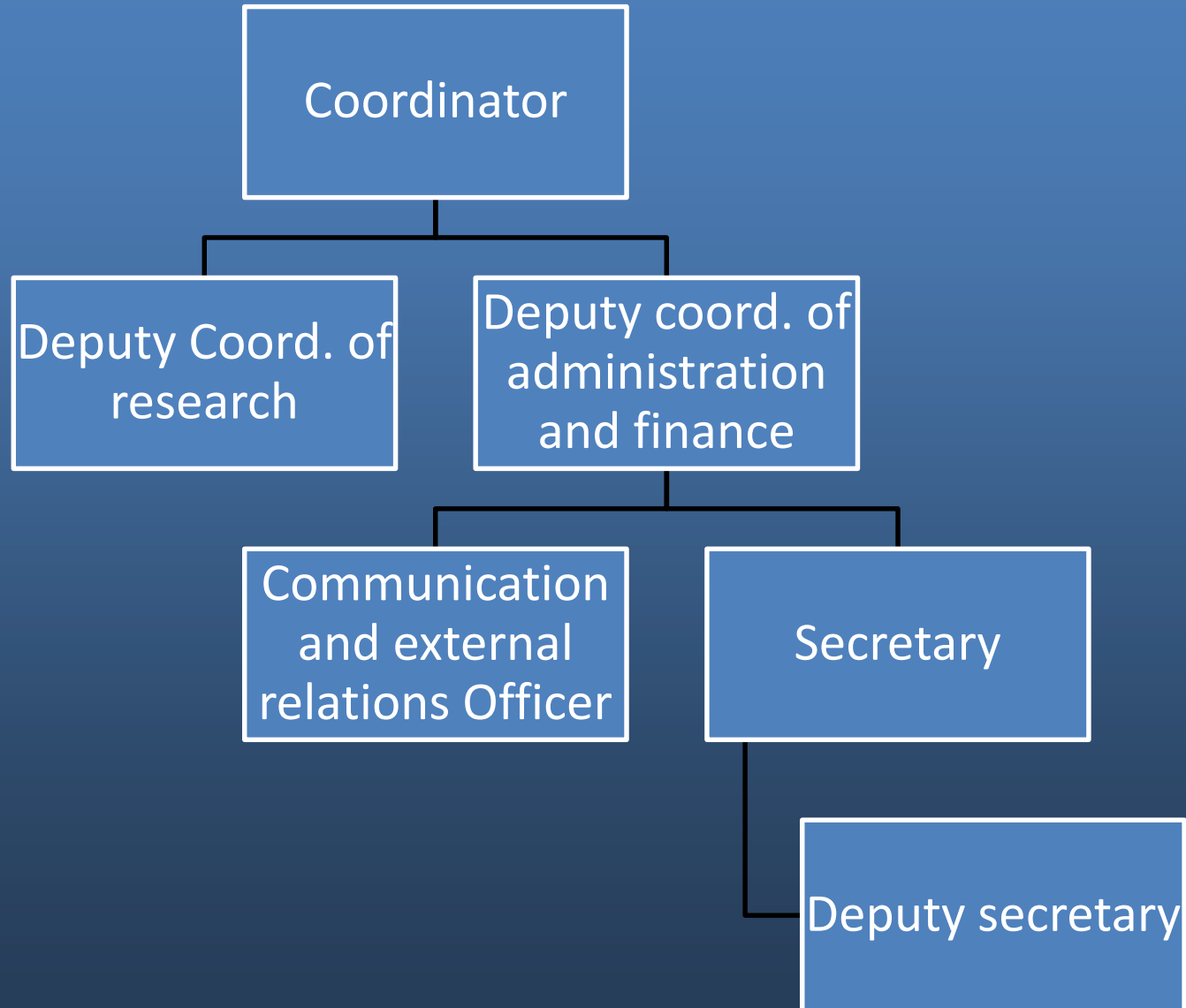
# Group structure

Group composition (27 institutions identified):

- Research centers and institutions of higher Education dealing with Fisheries related sciences (priority 1)
- Governmental agencies dealing with environmental questions, water and sanitation, fisheries, methane, lacustrine transport) (priority 2 and 3)
- Fishermen cooperatives (priority 2), Non-profit local organizations(priority 3)
- Methane extraction companies (priority 2) and marine forces (priority 3)

...both in DRC and Rwanda

# Group structure



## Resources needed

- Each group committee member use his/her office provided by his/her institution as a working space
- Need for **computers**, at least for the head roles (6), external disk drives for making backups the information. Invest in a decent **cloud** (dropbox , googleDrive, etc.), so all the data can be kept somewhere safe in case a pc would crash,... should be large enough
- A decent **internet connection** that is reliable and available all the time
- **Travel expenses** for meetings and **Operating costs**
- **Allowances** for all head members (no figures decided)
- Available budget for awarding small grants
- Venue and catering costs for annual meeting



## Next steps and annual meeting

### 1) Proposed tasks - **Timestamp:**

- Nomination of the committee members → **now**
- assign roles of (deputy)secretary → **within one month**
  - LKMP or UOB
- Write a paper explaining what the LKAG will actually do (Kind of vision and mission text?) → **Within one month**
- Define tasks of the committee in an early stage → **within two months**
- Inform potential institutions → **within two months**

- Institution appoint a focal point → **within three months**
- Identify the individual tasks of each member of the committee → **within three months**
- Invite individuals where the approval of the institutions is not necessary
- Annual meeting with the whole group → **within one year**

# Proposed Lake Kivu Advisory Committee

**Coordinator:** Prof Fabrice Muvundja (ISP Bukavu-DRC)

**Deputy Research coordinator:** Prof Pascal Isumbisho (ISP Bukavu-DRC)

**Deputy Coordinator of Administration and Finances:** Edouard Rugema  
(Private sector-Rwanda)

**Communication and external relations:** Ir. Deo Nahayo (INES-Rwanda)

**Secretary :** Suggested to Lake Monitoring Program (Rwanda)

**Deputy Secretary:** Suggested to the Université Officielle de Bukavu  
(DRC)

# Priorities

- The nominated persons of the Lake Advisory Group Committee should immediately inform and convince their respective institutions to welcome the initiative in their working space
- They should quickly start making contacts with all potential institution members to nominate their focal points